

Kimberley Agricultural Investment Pty Ltd



Jim Engelke

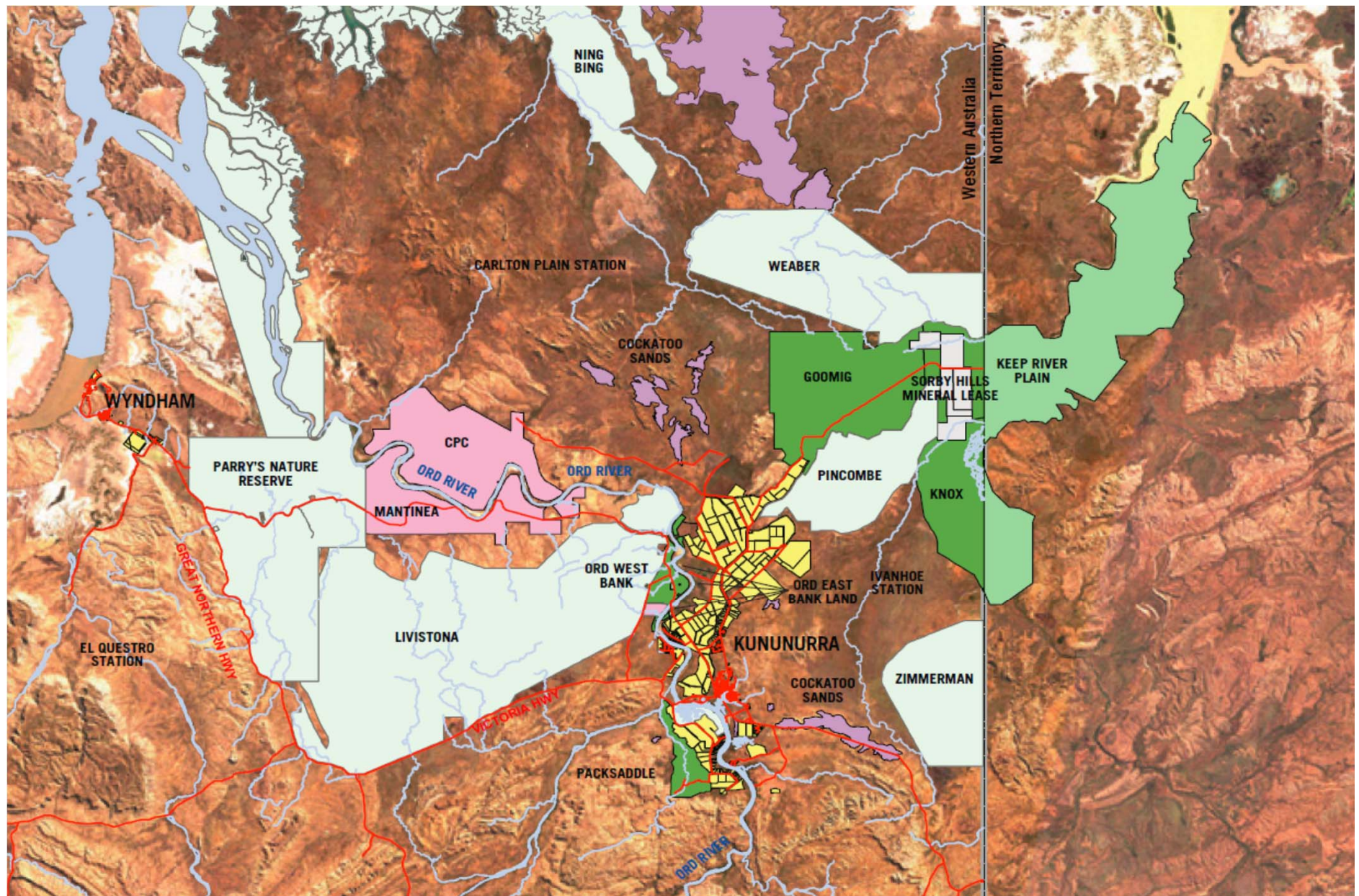
Project Background

- February 2012
 - Shanghai Zhongfu / KAI submitted an Expression of Interest to State of Western Australia.
- November 2012
 - KAI named preferred proponent
- July 2013
 - Commenced development works – Early Access Agreement
- December 2013
 - KAI signed formal agreement with State of WA continuing to develop under an Early Access Agreement









Basis of Project Proposal

- Goomig lands - State completed head-works
 - 6665 ha plus MG Corp lots
- Knox Plain - Option to seek approvals
 - ~4,500 – 5000ha arable
- Proposed sugar industry with ancillary industries
 - Based on reaching scale (minimum 2,000,000 tonne – 20,000ha & expanding)
 - Requires land in NT to reach desired scale
 - No scale – no sugar
- Scale & Investment timing



Development - KAI

- Local support has been strong
- Become a member of the local community
- Indigenous employment & economic engagement
- Engage local expertise and knowledge
- Blend the best of China and Australia
 - people and experience (based in both China & Australia)
 - equipment and technology (global)

Current Works

- Field work commenced in July 2013 – Clearing & ploughing
 - 45 weeks – 4500ha pushed
- Farm design and development for flood irrigation – Laser buckets
- Bulk earthmoving for irrigation dams, channels and drains
- Farming to commence in 2015

















Farming & processing

- Short term – Grain growing
 - Chia, sorghum, quinoa?
- Medium term – Sweet sorghum
 - Old Sugar Mill
 - Baijiu
- Long term – Sugar mill and ancillary industry
 - Crystal, molasses, ethanol, stock feed, energy

Challenges for KAI & North Australia

- Investment ready platform (to achieve scale)
 - Investment timing critical – It is not patient money
 - Land tenure, approvals
 - Scale (or lack of) impacts commercial decisions & timing
- Farming – difficult in any currency
- Key infrastructure – Logistics & processing
- Potential – Perception - Reality





