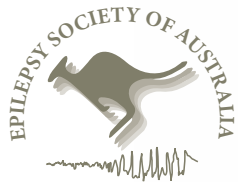


# EPILEPSY SOCIETY OF AUSTRALIA

33rd Annual Scientific Meeting  
Hyatt Regency Hotel, Sydney

6 - 8 November 2019

[www.ivvy.com/event/ESA19](http://www.ivvy.com/event/ESA19)



## Call for Abstracts

## CALL FOR ABSTRACTS

### Invitation

On behalf of the Epilepsy Society of Australia, we have great pleasure in inviting you to submit an abstract for the 33rd Annual Scientific Meeting, which will be held in Sydney, 6th – 8th November 2019.

Abstracts are invited for platform and poster presentations on all aspects of clinical, basic science or allied health studies of epilepsy. If you wish to submit an abstract for consideration by the Scientific Program Committee (SPC), you must also intend to register for the Meeting.

The major themes at the 2019 meeting will be Drug Resistant Epilepsy in Children, ICU Epileptology and Devices for Epilepsy – the Future. Our international guest speakers are Prof Michael Duchowny, Prof R. Edward Faught, Prof Lawrence J. Hirsch and Prof Greg Worrell.

We anticipate that the meeting will attract about 250 delegates from around Australia and South East Asia, including trainees, practising neurologists, technologists, scientists, nurses and allied health professionals. The meeting will provide a great opportunity for networking and exchange of information.

The 2019 meeting will be held at the Hyatt Regency Sydney. We look forward to having you join us at the beautiful venue.

**Hanka Laue-Gizzi & Kaitlyn Parratt**

*Co-Chairs, ESA Annual  
Scientific Meeting Committee*

and

**Terence O'Brien**

*ESA President, 2019*

## International keynote speakers

### Professor Greg Worrell

Greg Worrell, MD, PhD is Professor and Vice-chair of Neurology research at Mayo Clinic. His research and clinical practice are at the interface of neurology and engineering where his team is integrating brain implants with local and distributed computing resources to create next generation epilepsy devices.



### Professor Michael Duchowny

Dr. Duchowny interned in Pediatrics at the University of Chicago Hospitals and Clinics, and was a resident in Pediatrics at Montefiore Hospital, Albert Einstein College of Medicine. After serving in the United States Public Health Service as a Commissioned Officer and working as a Research Associate at the National Institutes of Health, he completed fellowship training in Neurology at the Harvard-Longwood Program where he was also a United Cerebral Palsy fellow. He joined the Neurology faculty at Harvard Medical School, first serving as Instructor, and then as Assistant Clinical Professor.



Dr. Duchowny came to Miami to join the Department of Neurology at Nicklaus (Miami) Children's Hospital. He is the founding director of the Epilepsy Program and Clinical Neurophysiology Fellowship. He currently holds the Chair in Comprehensive Epilepsy at Nicklaus Children's Hospital, and is a Professor of Neurology at the University of Miami Leonard Miller School Of Medicine, and Clinical Professor at the Florida International University College of Medicine. He also chaired the Strategic Planning Initiative for the Hospital's Brain Institute. Dr. Duchowny has maintained a longstanding commitment to Bioethics and served as Chairman of the Hospital's Institutional Review Board for 16 years.

### Professor R. Edward Faught

R. Edward Faught is Professor of Neurology at the Emory University School of Medicine in Atlanta, Georgia, USA, and Director of the Emory Epilepsy Center. He is a graduate of Harvard College (A.B. cum laude) and Vanderbilt University (M.D). He trained in neurology and epilepsy at the University of Virginia, Charlottesville. He was formerly Professor of Neurology and Division Director, Epilepsy, at the University of Alabama in Birmingham.



He is currently Chair of the International League Against Epilepsy Task Force on Epilepsy in the Elderly. His research interests are in clinical trials of antiseizure drugs and the epidemiology of epilepsy.

### Professor Lawrence J. Hirsch

Dr. Hirsch has published more than 150 original research manuscripts and more than 100 invited reviews, editorials or chapters. His research interests and publications are on topics such as brain monitoring with EEG in the critically ill, status epilepticus, brain stimulation for epilepsy, epilepsy surgery, seizure semiology, electrocorticography, brain mapping, effectiveness and tolerability of antiepileptic drugs, seizure clusters, and sudden death in epilepsy (SUDEP). Dr. Hirsch has directed symposia and lectured at many national and international epilepsy and neurology meetings. He is the founder and former chair of the Critical Care EEG Monitoring Research Consortium, which now includes >50 centers. He has won multiple teaching awards, and is co-author of the first-ever Atlas of EEG in Critical Care.



## Scientific Program Committee

- ◆ Hanka Laue-Gizzi (Co-chair)
- ◆ Kaitlyn Parratt (Co-chair)
- ◆ John Archer
- ◆ Patrick Carney
- ◆ Nicholas Lawn
- ◆ Stephen Malone
- ◆ Terry O'Brien (ESA president)
- ◆ Piero Perucca
- ◆ Lynette Sadleir
- ◆ Ingrid Scheffer
- ◆ Lata Vadlamudi

## Meeting Secretariat

Email esa\_asm@seedevents.com.au  
Ph +61 (0)423 827 488 (Lejla)



## Important dates

**Abstract submission close**  
Midnight AEST 15 July 2019

**Registration opening**  
Late July 2019

**Early Bird deadline**  
23 September 2019

**Accommodation deadline**  
4 October 2019